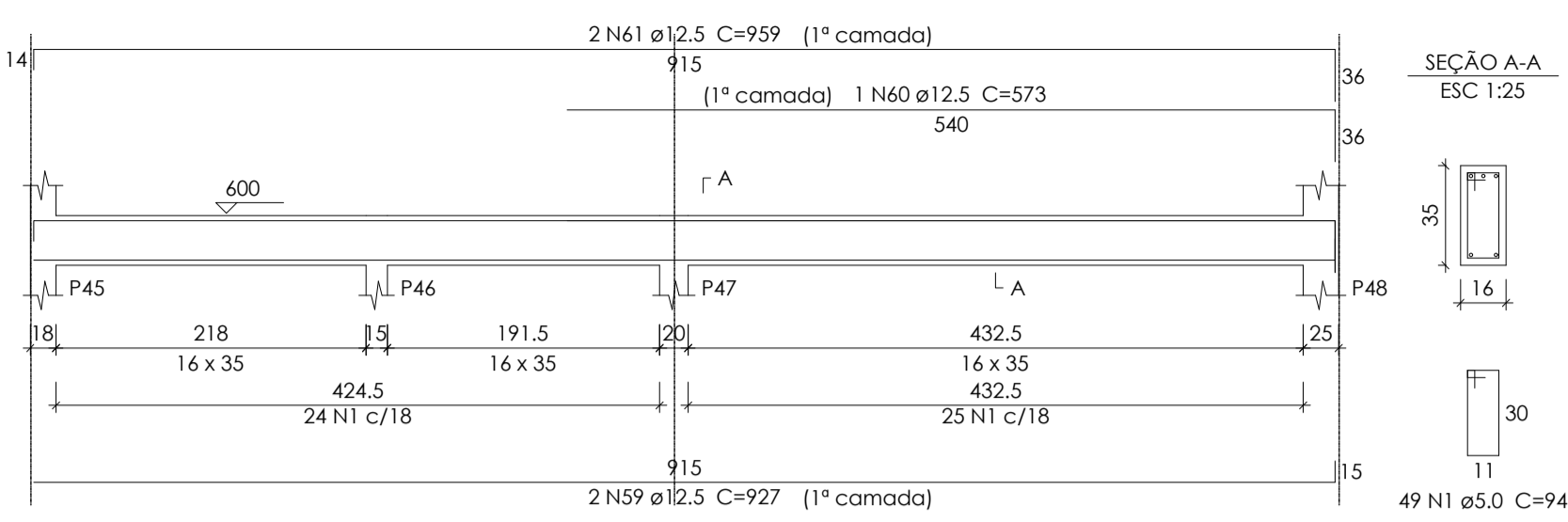
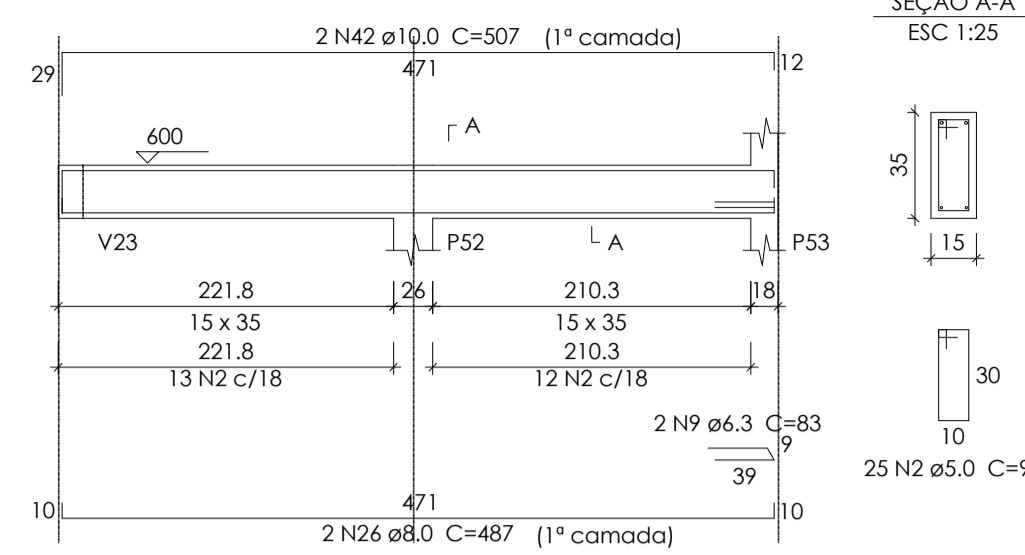


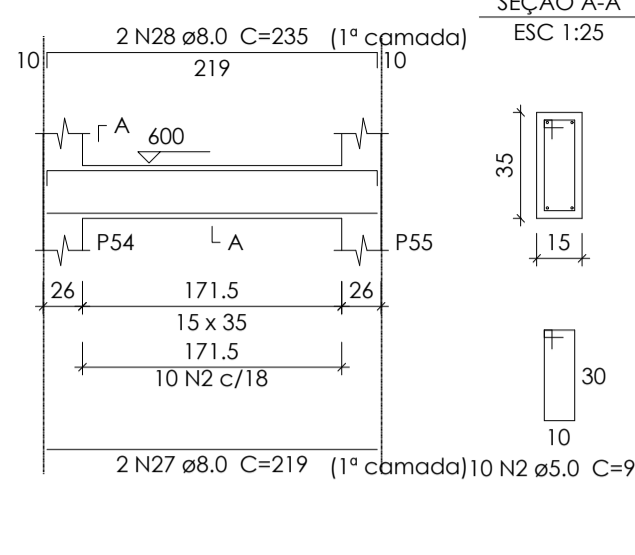
V14  
ESC 1:50



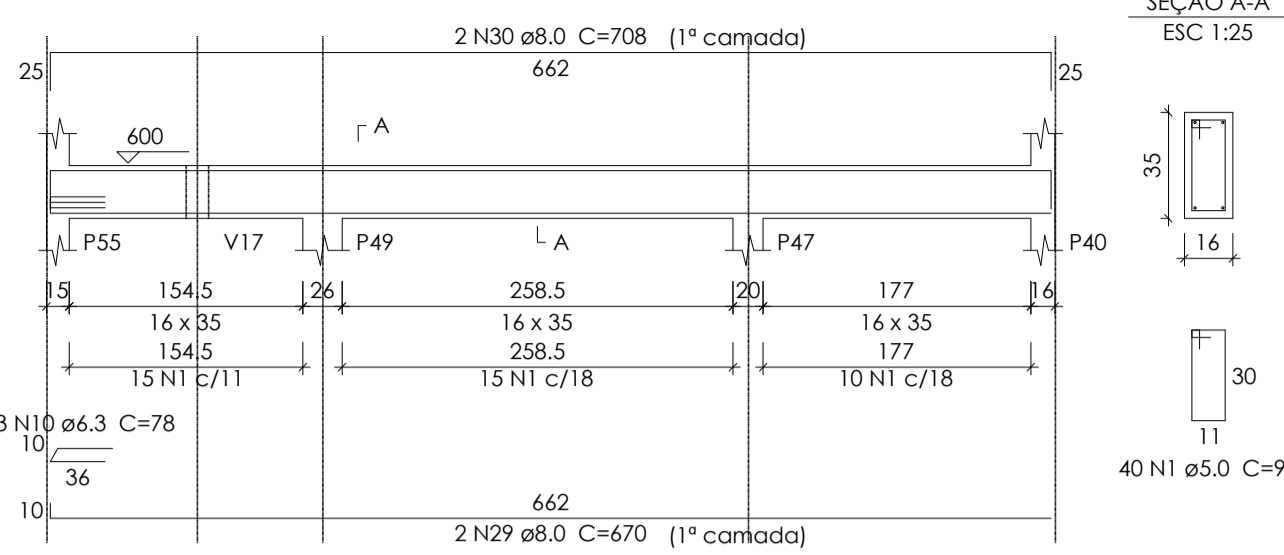
V17  
ESC 1:50



V18  
ESC 1:50



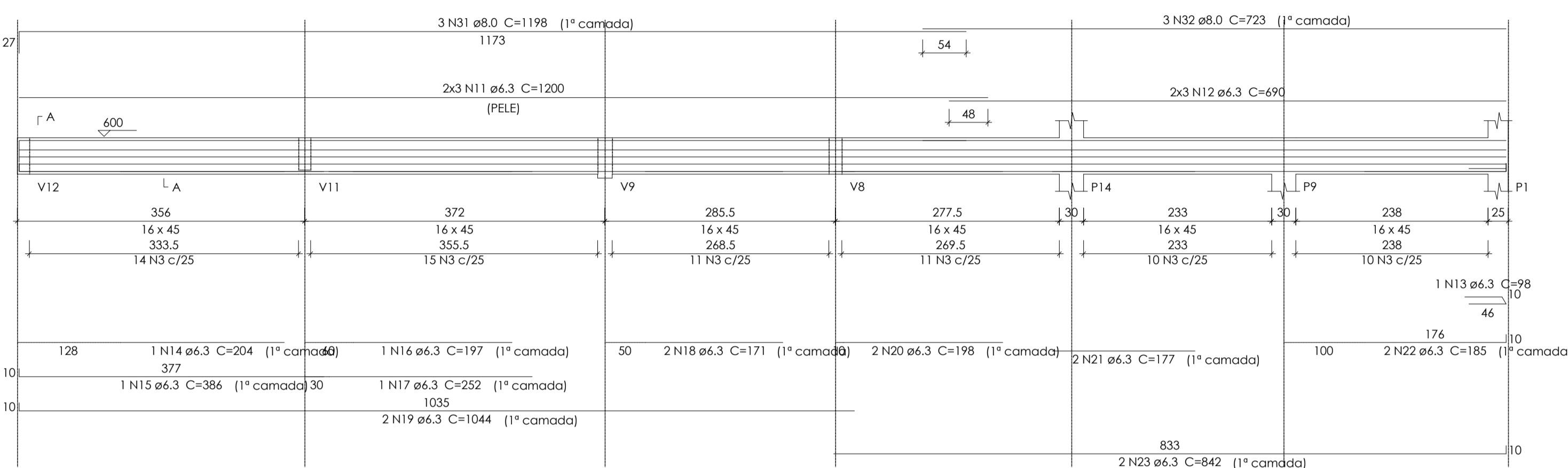
V23  
ESC 1:50



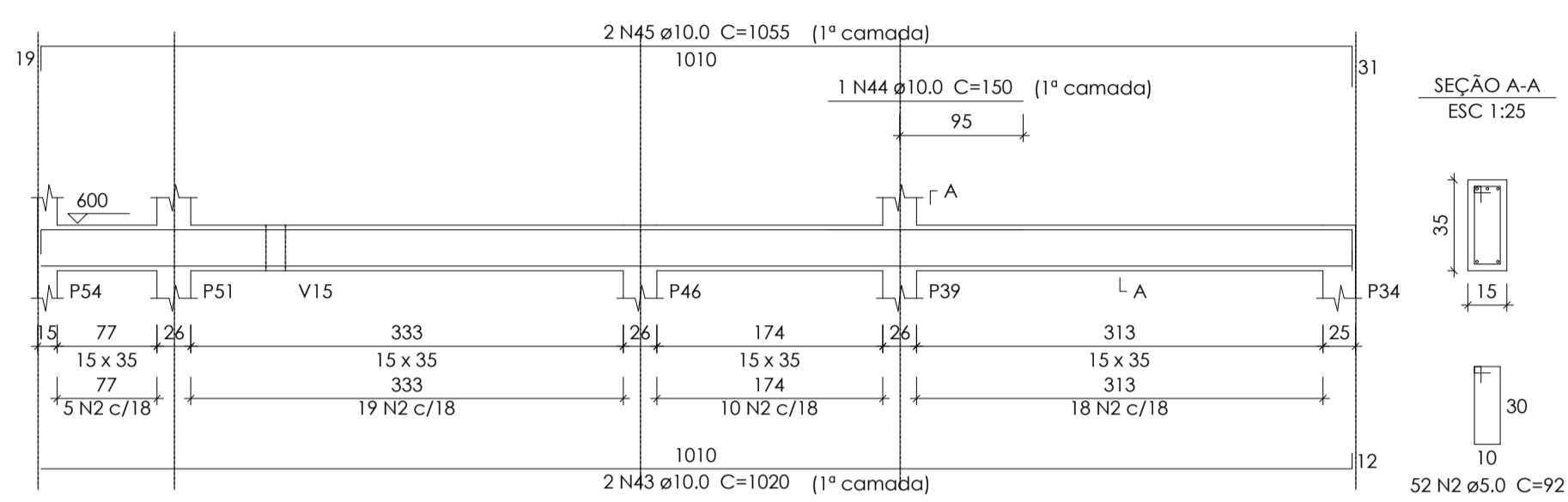
Relação do aço

2xP19	V14	V17	V18	V19	V20	V21	V22	V23	V24	V25	V26	V27
AÇO	N	DIAM	Q	UNIT (cm)	C.TOTAL (cm)							
CA60	1	5.0	186	94	17484							
	2	5.0	162	92	14904							
	3	5.0	71	114	8094							
	4	5.0	79	128	10112							
	5	5.0	15	82	1230							
	6	5.0	2	446	892							
	7	5.0	35	102	3570							
	8	5.0	32	68	2176							
	9	6.3	2	83	166							
	10	6.3	3	78	234							
	11	6.3	12	1200	14400							
CA50	12	6.3	6	690	4140							
	13	6.3	1	98	98							
	14	6.3	1	204	204							
	15	6.3	1	386	386							
	16	6.3	1	197	197							
	17	6.3	1	252	252							
	18	6.3	2	171	342							
	19	6.3	2	1044	2088							
	20	6.3	2	198	396							
	21	6.3	2	177	354							
	22	6.3	2	185	370							
	23	6.3	2	842	1684							
	24	6.3	6	714	4284							
	25	6.3	4	781	3124							
	26	8.0	2	487	974							
	27	8.0	2	219	438							
	28	8.0	2	235	470							
	29	8.0	2	670	1340							
	30	8.0	2	708	1416							
	31	8.0	3	1198	3594							
	32	8.0	3	723	2169							
	33	8.0	2	254	508							
	34	8.0	2	272	544							
35	8.0	2	929	1858								
36	8.0	2	549	1098								
37	8.0	2	781	1562								
38	8.0	2	576	1152								
39	8.0	2	606	1212								
40	8.0	2	570	1140								
41	8.0	2	578	1156								
42	10.0	2	507	1014								
43	10.0	2	1020	2040								
44	10.0	1	150	150								
45	10.0	2	1055	2110								
46	10.0	2	911	1822								
47	10.0	2	960	1920								
48	10.0	2	1199	2398								
49	10.0	2	778	1556								
50	10.0	2	359	718								
51	10.0	1	141	141								
52	10.0	2	369	738								
53	10.0	3	353	1059								
54	10.0	1	158	158								
55	10.0	2	223	446								
56	10.0	1	120	120								
57	10.0	2	175	350								
58	10.0	8	187	1496								
59	12.5	2	927	1854								
60	12.5	1	573	573								
61	12.5	2	959	1918								
62	12.5	1	235	235								
63	12.5	2	1198	2396								
64	12.5	2	742	1484								

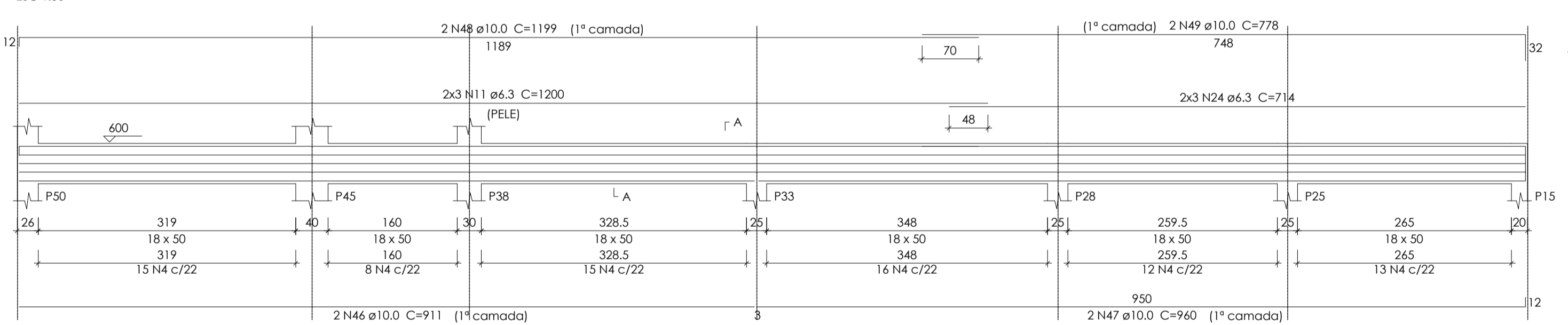
V19  
ESC 1:50



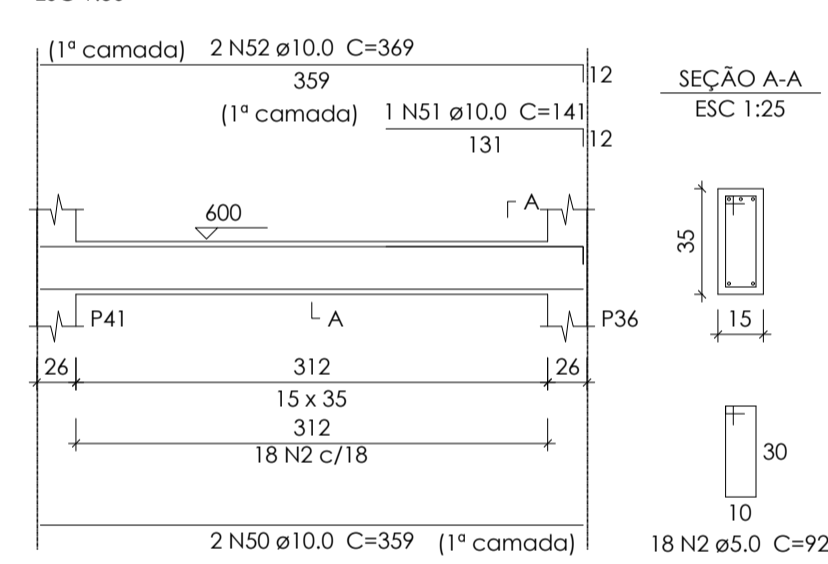
V21  
ESC 1:50



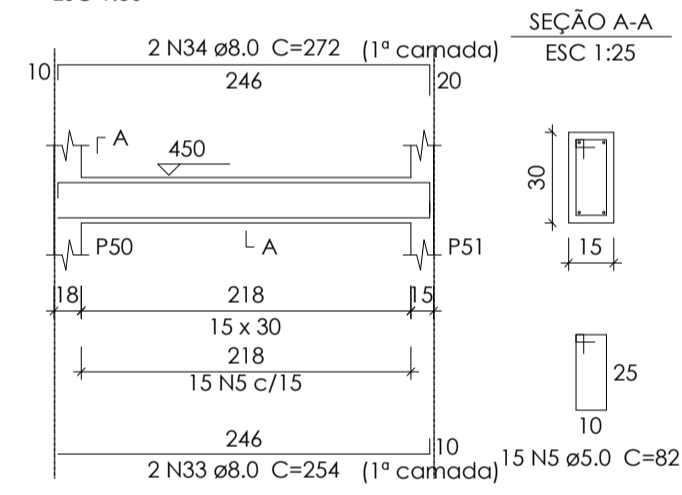
V20  
ESC 1:50



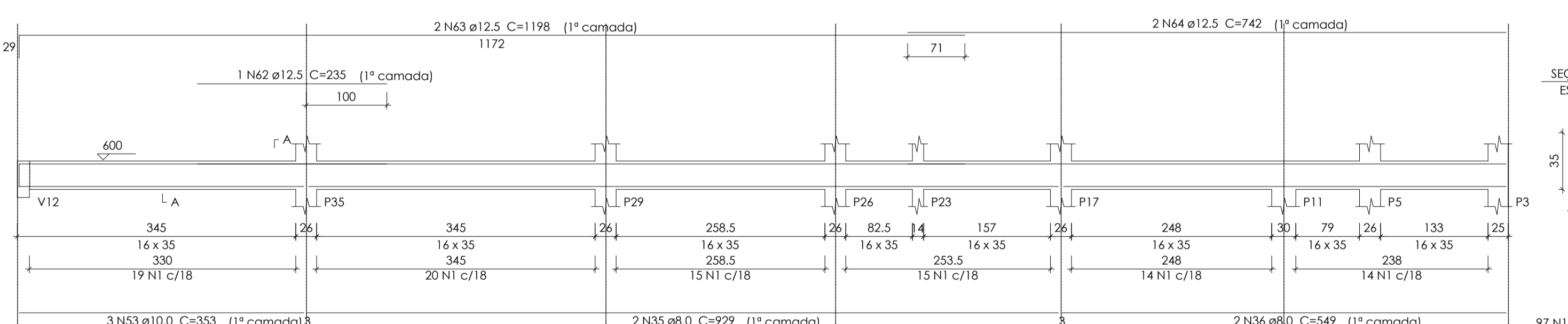
V24  
ESC 1:50



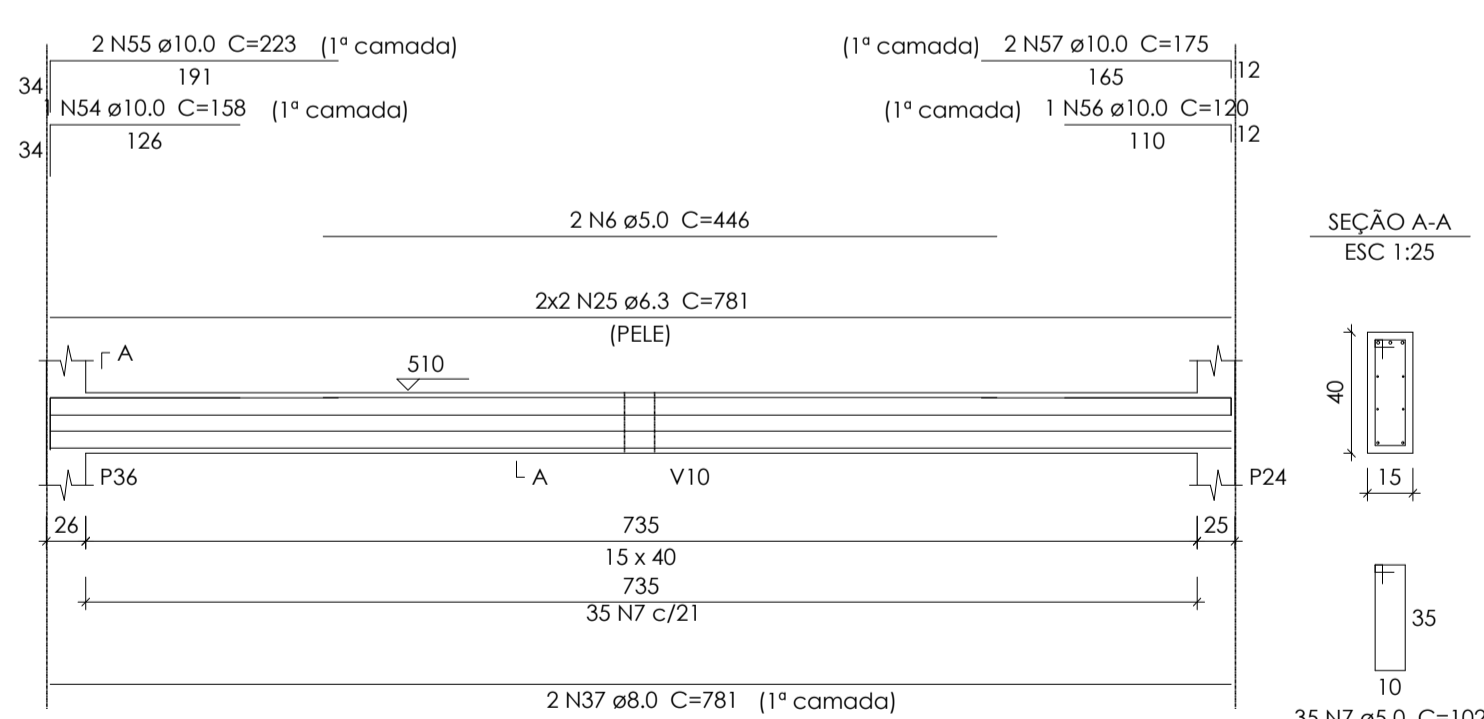
V29  
ESC 1:50



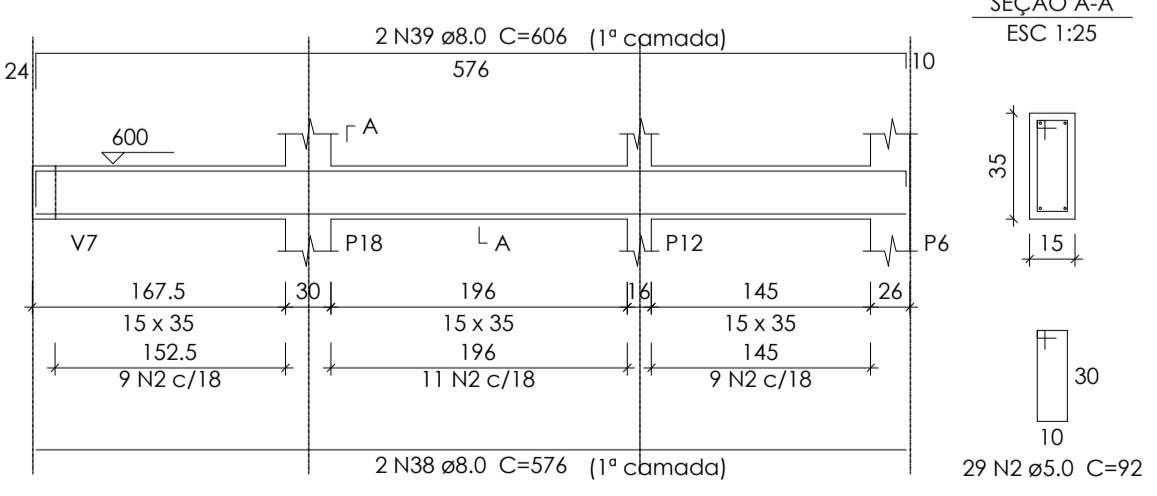
V22  
ESC 1:50



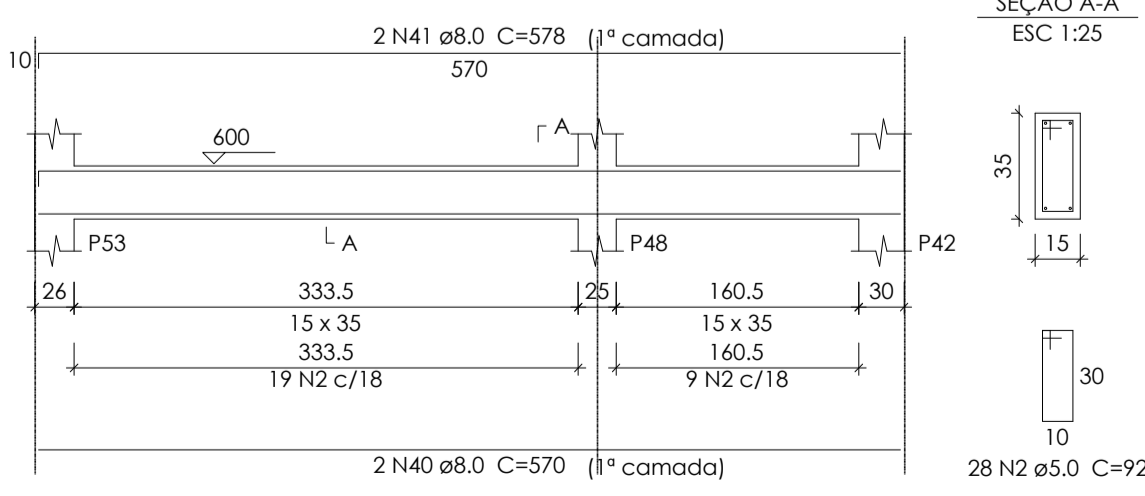
V25  
ESC 1:50



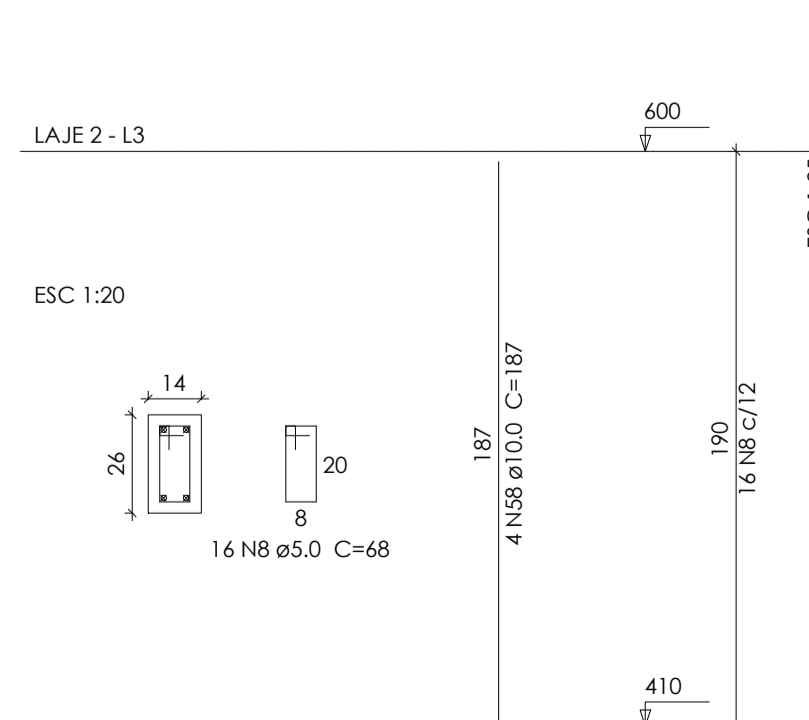
V26  
ESC 1:50



V27  
ESC 1:50



P19=P20



**FOCO**  
engenharia  
PROJETOS E EXECUÇÕES

**Construção câmara de vereadores**

**Vigas pavimento**

**laje 2**

TÍTULO:

FOLHA: **20/30**

DATA: **12/11/21**

---

DADOS DO PROPRIETÁRIO:

PROPRIETÁRIO(A): **MUNICÍPIO DE PORTO DOS GAÚCHOS**

ENDEREÇO DO PROPRIETÁRIO(A): **Praça Leopoldina Wilke 19, Centro - Porto dos Gaúchos - MT**

TIPO DA OBRA: **Construção comercial em alvenaria, forro de gesso e cobertura isotérmica**

CPF / CNPJ: **03.204.187/0001-33**

TELEFONE: **(66)3526-2000**

---

AUTOR DO PROJ.:

**Evelin Luani Montagna**  
Engenheira Civil  
Crea-MT: 039125

RESP. TÉCNICO:

**Evelin Luani Montagna**  
Engenheira Civil  
Crea-MT: 039125

PROPRIETÁRIO(A):

**Município de Porto dos Gaúchos**  
CNPJ: 03.204.187/0001-33